

247B/257B Series 3

Multi-Terrain Loaders



259B Series 3

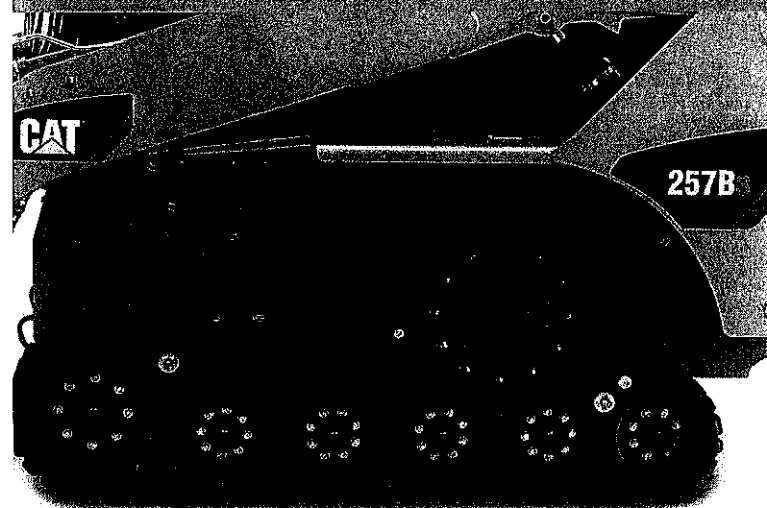
Compact Track Loaders



	247B Series 3	257B Series 3	259B Series 3
Engine			
Engine Model	Cat C2.2 T	Cat C3.4 DIT	Cat C3.4 DIT
Net Power (SAE 1349/ISO 9249)	42 kW (56 hp)	53 kW (71 hp)	53 kW (71 hp)
Weights			
Operating Weight	3174 kg (6,997 lb)	3656 kg (8,060 lb)	4052 kg (8,934 lb)
Operating Specifications			
Rated Operating Capacity at 50% Tipping Load	975 kg (2,150 lb)	1213 kg (2,675 lb)	1338 kg (2,950 lb)

Undercarriage

Choice of undercarriage to meet your specific needs.



Multi Terrain Loader Undercarriage

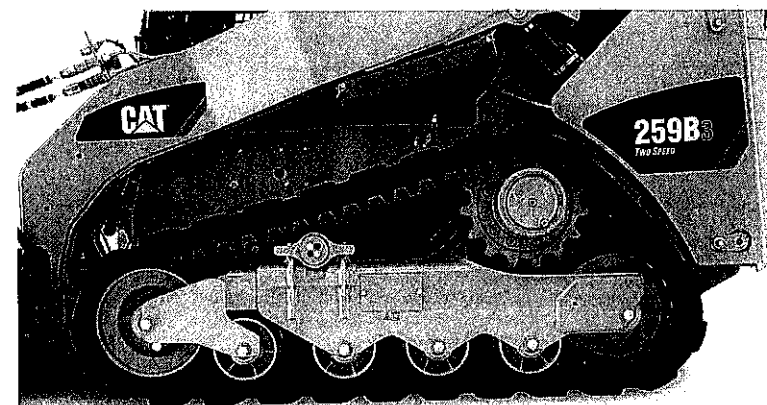
The Cat 247B Series 3 and 257B Series 3 Multi Terrain Loaders feature a fully suspended, rugged, durable rubber track that is lightweight and pliable, yet reinforced with high tensile strength cords. The undercarriage provides extremely low ground pressure, allowing these machines to operate over sensitive surfaces and in soft underfoot conditions. The independently suspended undercarriage distributes the load and greatly reduces shock and vibration throughout the machine for a comfortable ride and excellent bucket load retention. The undercarriage also features:

- Heavy duty torsion axles that independently suspend each side of the machine frame for a smoother ride over rough terrain, even at high speeds.
- Components that are replaceable as individual wear items, reducing owning and operating costs.
- Low ground pressure: 27.3 kPa (4.0 psi) for the 247B Series 3 and 31 kPa (4.5 psi) for the 257B Series 3.

Compact Track Loader Undercarriage

The Cat 259B Series 3 Compact Track Loader features a fully suspended, steel embedded rubber track undercarriage for versatility, durability and comfort. Heavy-duty torsion axles suspend the undercarriage and can move independently relative to the machine and each other. These axles absorb most of the shock to the machine and operator, especially over rough terrain. This means smooth travel, even at high speeds, as well as better load retention and greater productivity. The undercarriage also features:

- Steel embedded rubber track that provides excellent durability in a wide variety of applications.
- Steel rollers with metal face seals for long-term durability and reliability in even the toughest conditions.
- Simple recoil grease tensioning system for quick track tension adjustment.
- Two track options – standard track width of 320 mm (12.6 in) or optional 400 mm (15.7 in) track.
- Low ground pressure: 41.2 kPa (6.0 psi) with the standard track and 34.4 kPa (5.0 psi) with optional 400 mm (15.7 in) track.



B-Series 3 Compact Track and Multi Terrain Loaders Specifications

Engine

Engine Model		
247B Series 3	Cat C2.2 T	
257B/259B Series 3	Cat C3.4 DIT	
Net Power (SAE 1349/ISO 9249)		
247B Series 3	42 kW	56 hp
257B/259B Series 3	53 kW	71 hp
Gross Power (SAE J1995)		
247B Series 3	46 kW	62 hp
257B/259B Series 3	55 kW	74 hp
Displacement		
247B Series 3	2.2 L	134 in ³
257B/259B Series 3	3.3 L	201 in ³
Stroke		
247B Series 3	100 mm	3.9 in
257B/259B Series 3	120 mm	4.7 in
Bore		
247B Series 3	84 mm	3.3 in
257B/259B Series 3	94 mm	3.7 in

Weights*

Operating Weight			
247B Series 3	3174 kg	6,997 lb	
257B Series 3	3656 kg	8,060 lb	
259B Series 3	4052 kg	8,934 lb	
(320 mm/12.6 in tracks)			
259B Series 3	4185 kg	9,227 lb	
(400 mm/15.7 in tracks)			

Operating Specifications*

Rated Operating Capacity (50% Tipping Load)		
247B Series 3	975 kg	2,150 lb
257B Series 3	1213 kg	2,675 lb
259B Series 3	1338 kg	2,950 lb
Rated Operating Capacity (35% Tipping Load)		
247B Series 3	683 kg	1,505 lb
257B Series 3	848 kg	1,870 lb
259B Series 3	937 kg	2,065 lb
Rated Operating Capacity with Optional Counterweight		
257B Series 3	1236 kg	2,725 lb
259B Series 3	1360 kg	3,000 lb
Tipping Load		
247B Series 3	1950 kg	4,300 lb
257B Series 3	2427 kg	5,350 lb
259B Series 3	2676 kg	5,900 lb
(320 mm/12.6 in tracks)		
Breakout Force, Tilt Cylinder		
247B Series 3	1842 kg	4,060 lb
257B Series 3	2045 kg	4,508 lb
259B Series 3	2045 kg	4,508 lb
Ground Contact Area		
247B Series 3	1.14 m ²	1,770 in ²
257B Series 3	1.14 m ²	1,770 in ²
259B Series 3	0.96 m ²	1,495 in ²
(320 mm/12.6 in tracks)		
259B Series 3	1.19 m ²	1,848 in ²
(400 mm/15.7 in tracks)		
Ground Pressure		
247B Series 3	27.3 kPa	4.0 psi
257B Series 3	31 kPa	4.5 psi
259B Series 3	41.2 kPa	6.0 psi
(320 mm/12.6 in tracks)		
259B Series 3	34.4 kPa	5.0 psi
(400 mm/15.7 in tracks)		

* Operating Weight, Operating Specifications and Dimensions all based on 75 kg (165 lb) operator, all fluids, 1 speed (247B/257B Series 3) or 2 speed (259B Series 3), OROPS, dirt bucket, no optional counterweights and manual quick coupler (unless otherwise noted).

Hydraulic System

Hydraulic Flow	Standard	
Loader Hydraulic Pressure	23 000 kPa	3,335 psi
Loader Hydraulic Flow – 247B Series 3	61 L/min	16 gal/min
Loader Hydraulic Flow – 257B/259B Series 3	83 L/min	22 gal/min
Hydraulic Power (calculated) – 247B Series 3	23.2 kW	31 hp
Hydraulic Power (calculated) – 257B/259B Series 3	31.9 kW	42.8 hp
Hydraulic Flow	High Flow – 257B Series 3, 259B Series 3	
Loader Hydraulic Pressure	23 000 kPa	3,335 psi
Loader Hydraulic Flow	117 L/min	31 gal/min
Hydraulic Power (calculated)	45 kW	60.3 hp

B-Series 3 Compact Track and Multi Terrain Loaders Specifications

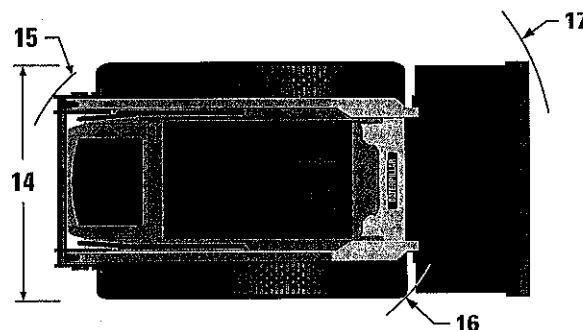
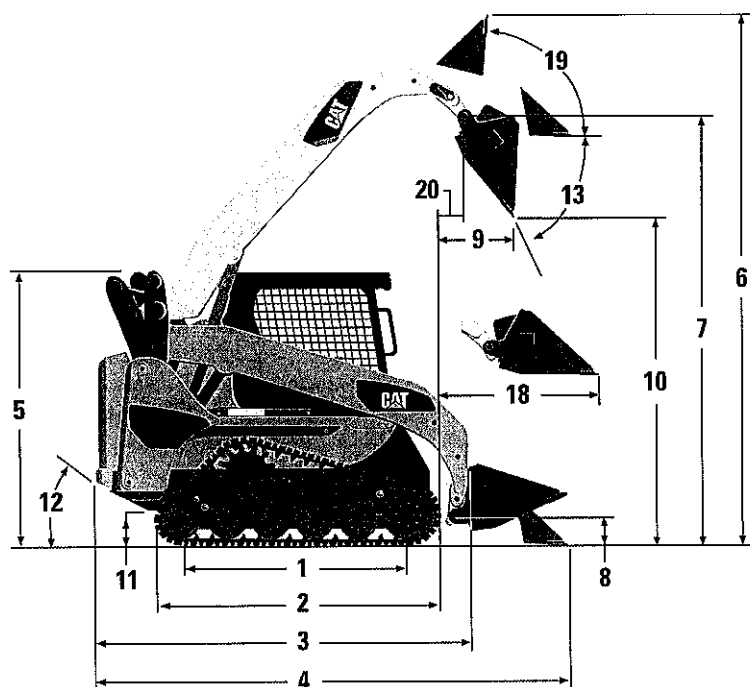
Cab	
ROPS	SAE J1040 MAY94, ISO 3471:1994
FOPS	SAE J/ISO 3449 APR98 LEVEL I, ISO 3449:1992 Level I
FOPS Level II	SAE J/ISO 3449 APR98 LEVEL II, ISO 3449:1992 Level II (optional)

Power Train		
Travel Speed (Forward or Reverse)		
247B Series 3	11.3 km/h	7.0 mph
257B Series 3	11.1 km/h	6.9 mph
259B Series 3	9.5 km/h	5.9 mph
Travel Speed (Forward or Reverse) – 2 Speed		
257B Series 3 (optional)	16.1 km/h	10 mph
259B Series 3 (standard)	13.6 km/h	8.5 mph

Service/Refill Capacities		
Cooling System	10 L	2.6 gal
Engine Crankcase		
247B Series 3	10 L	2.6 gal
257B/259B Series 3	9 L	2.4 gal
Fuel Tank		
247B Series 3	65 L	17 gal
257B/259B Series 3	84 L	22.2 gal
Hydraulic System	55 L	14.5 gal
Hydraulic Tank	35 L	9.2 gal

B-Series 3 Compact Track and Multi Terrain Loaders Specifications

Dimensions



257B Series 3		
	mm	in
1 Length of Track on Ground	1499	59
2 Overall Length of Track	1899	75
3 Length without Bucket	2718	107
4 Length with Bucket on Ground	3439	135
5 Height to Top of Cab	2035	80
6 Maximum Overall Height	3895	153
7 Bucket Pin Height at Maximum Lift	3069	121
8 Bucket Pin Height at Carry Position	212	8
9 Reach at Maximum Lift and Dump	758	30
10 Clearance at Maximum Lift and Dump	2309	91
11 Ground Clearance	246	10
12 Departure Angle	37°	
13 Maximum Dump Angle	50°	
14 Vehicle Width	1676	66
15 Turning Radius from Center - Machine Rear	1451	57
16 Turning Radius from Center - Coupler	1412	56
17 Turning Radius from Center - Bucket	2192	86
18 Maximum Reach with Arms Parallel to Ground	1335	53
19 Rack Back Angle at Maximum Height	87°	
20 Bucket Pin Reach at Maximum Lift	358	14.1